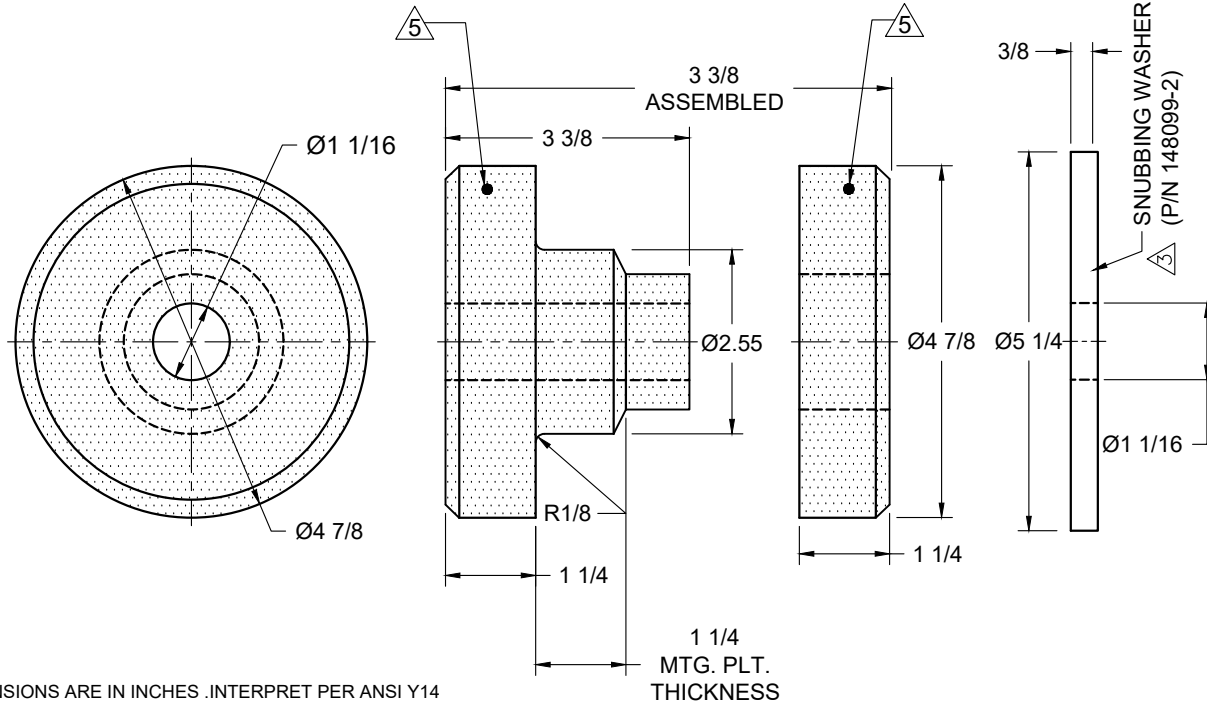


REV.	DESCRIPTION	DATE	BY

## MODEL RB5 ELASTOMERIC RING &amp; BUSHING ASSY.

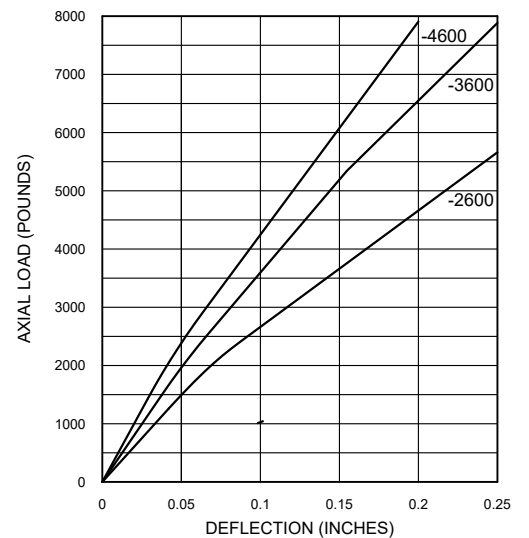
PART NUMBER	MODEL NO.	RATED LOAD (LBS)	RADIAL STATIC LOAD MAX LBS.	DUROMETER $\pm 5$	COLOR CODE	MATERIAL
770087-1	RB5-2600	2600	1000	50	RED	BR BRG NEO
770087-2	RB5-3600	3600	1450	60	GREEN	BR BRG NEO
770087-3	RB5-4600	4600	1900	70	YELLOW	BR BRG NEO
770087-4	RB5-3600A	3600	1450	60	ORANGE	NATURAL RUBBER



## NOTES:

- ALL DIMENSIONS ARE IN INCHES. INTERPRET PER ANSI Y14
- ALL DIMENSIONS ARE NOMINAL AND FOR REFERENCE ONLY.
- SNUBBING WASHER IS OPTIONAL, ORDER SEPERATE ON PURCHASE ORDER.  
FINISH :YELLOW ZINC PLATED PER ASTM B633 TYPE II, CLASS SC 3 UNLESS OTHERWISE SPECIFIED .
- COLOR-CODE "MARK "IS AN ACCEPTABLE ADDITION TO MODEL STAMPING .
- STAMPING SURFACE LOCATION AS MARKED ON DRAWING.
- APPROX. WEIGHT:  
RB5 RING & BUSHING ASSY: 3.4 LBS  
RB5 SNUBBING WASHER: 2.2 LBS
- 1 1/16" HOLE FOR 1" BOLT

AXIAL LOAD Vs DEFLECTION (1.25 THICK MOUNTING PLATE)



OTHER MATERIALS, COMPOUNDS, OR FINISHES WITH EQUAL OR SUPERIOR PROPERTIES MAY BE SUBSTITUTED AS THEY BECOME AVAILABLE.



## CERTIFIED FOR:

JOB NAME: \_\_\_\_\_  
 CUSTOMER : \_\_\_\_\_  
 CUSTOMER P.O.: \_\_\_\_\_  
 SALES ORDER: \_\_\_\_\_

MODEL RB5 2600-4600 LBS.  
 RING AND BUSHING  
 ELASTOMERIC ISOLATOR



**VMC GROUP**  
 CONTROLLED ENVIRONMENT SOLUTIONS™

Bloomington, NJ Houston, TX Corona, CA Wind Gap, PA

SCALE :	SHEET:	DRAWING NO.:	REVISION
NONE	1 OF 1		